



Formosan Entomologist

Journal Homepage: entsocjournal.yabee.com.tw

【Research report】

台灣實蠅科之一新屬 - 鹿角斑實蠅屬(*Cervarita*) (雙翅目: 實蠅科: 斑實蠅亞科) 【研究報告】

曾義雄、朱耀沂、陳健忠

*通訊作者E-mail:

Received: Accepted: 1992/04/22 Available online: 1992/03/01

Abstract

摘要

本文敘述台灣新發現實蠅科之一新屬 - 鹿角斑實蠅屬 (*Cervarita*) 及一新種 - 麗鹿角斑實蠅 (*C. picta*) 之形態。

Key words:

關鍵詞: 實蠅、新屬、新種。

Full Text:  [PDF\(0.19 MB\)](#)

下載其它卷期全文 Browse all articles in archive: <http://entsocjournal.yabee.com.tw>

A New Genus *Cervarita* of Fruit Flies from Taiwan (Diptera: Tephritidae: Trypetinae)

Yi-Hsiung Tseng Taichung Branch Office, Bureau of Commodity Inspection and Quarantine, Ministry of Economic Affairs, 2 Kung Hsueh Road, Taichung Taiwan, R.O.C.
Yau-I Chu Department of Plant Pathology and Entomology, National Taiwan University, 1 Roosevelt Road, Sec. IV, Taipei Taiwan, R.O.C.
Chien-Chung Chen Taiwan Agricultural Research Institute, 189 Chung Cheng Road, Wufeng, Taichung, Taiwan, R.O.C.

ABSTRACT

A new genus *Cervarita* and a new species, *C. picta* are defined in the present paper.

Key words: Fruit flies, new genus, new species.

臺灣實蠅科之一新屬——鹿角斑實蠅屬 (*Cervarita*) (雙翅目: 實蠅科: 斑實蠅亞科)

曾義雄 經濟部商品檢驗局臺中分局 臺中市工學路2號
朱耀沂 國立臺灣大學植物病蟲害學系 臺北市羅斯福路四段1號
陳健忠 臺灣省農業試驗所 臺中縣霧峰鄉中正路189號

摘 要

本文敘述臺灣新發現實蠅科之一新屬——鹿角斑實蠅屬(*Cervarita*)及一新種——麗鹿

角斑實蠅(*C. picta*)之形態。

關鍵詞：實蠅、新屬、新種。

***Cervarita*, new genus**

This new genus is similar to *Moritsugia* Shiraki in most respects, differing from it in having one pair of cylindrically elongated processes arising from lower frons between lunule and lower angle of eyes, 2 ocellar bristles, seta-like, well developed, and 2 pairs of superior and one pair of inferior fronto-orbital bristles.

Diagnosis. Frons broad, broader than eye, about half as broad as head, parallel-sided; one pair of cylindrically elongated processes lying on lower frons between lunule and lower angle of eyes; 2 pairs of superior and one pair of inferior fronto-orbital bristles; one pair of ocellar bristles, seta-like, rather fine; one pair of postocellar bristles, similar to fronto-orbital bristles. 3rd segment of antennae short, apex rounded; arista with short pubescence; Middle tibia with one blackish spur at tip. Wing rather long, slightly less than 3 times as long as broad; vein R_{4+5} with sparse, blackish, fine bristles; stigma short, about 0.6 times as long as 2nd costal cell; cross vein r-m and m-cu not parallel, r-m strongly oblique; m-cu straight, forming a 90 degree angle at apex of cell 1st M2, which is located just behind the middle of cell 1st M2. Bristles of throax complete, blackish, and chaetotaxy is as follows (in pair):

2 scapulars, 1 humeral, 1 praesutural,
1 anterior notopleural, 1 notopleural,
1 anterior supra alar, 2 post supra alars,
1 dorcentral, 1 prescutellar, 2 mesopleurals,
1 pteropleural, 1 sternopleural, 2 scutellars.

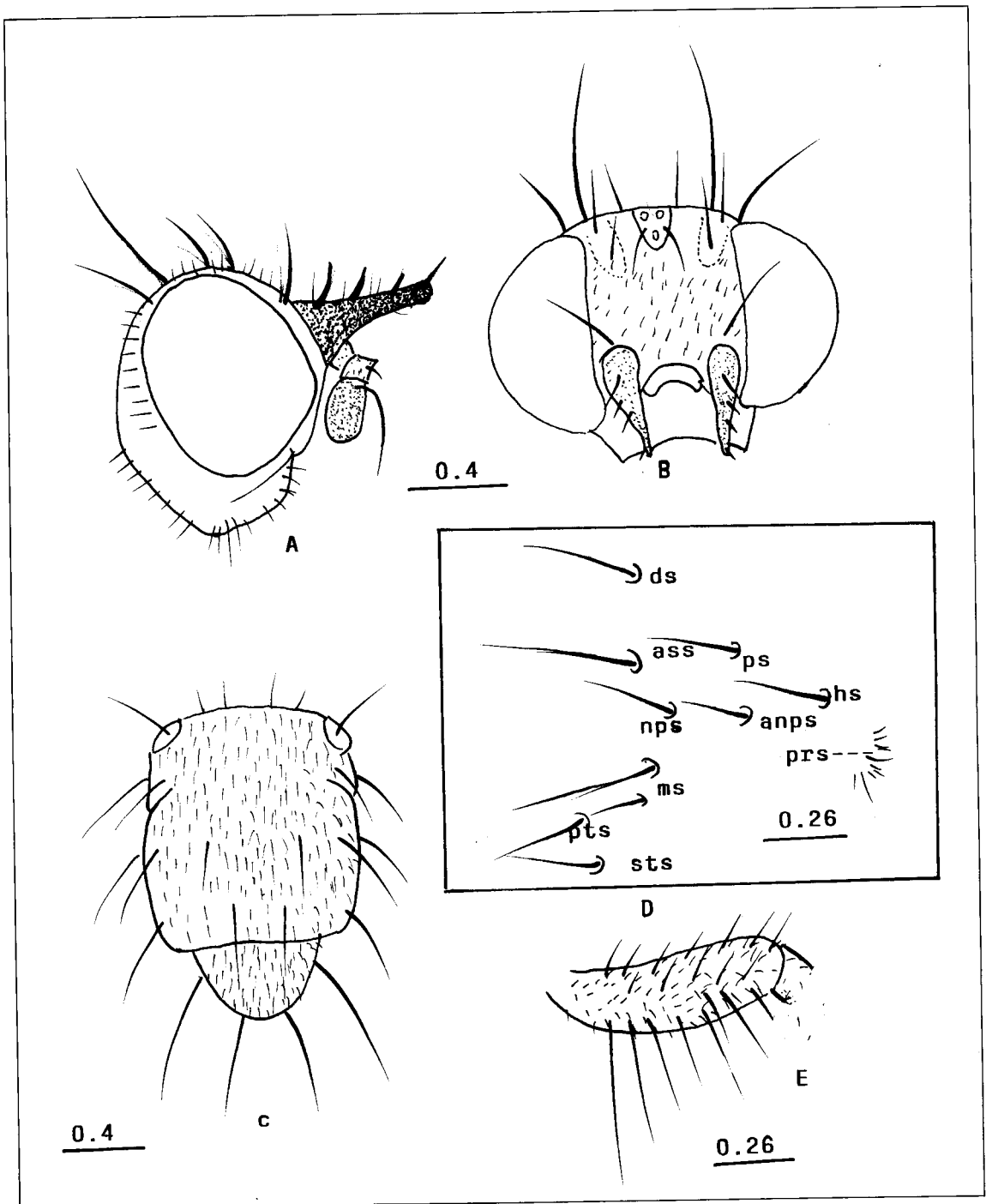
Type species: *Cervarita picta* n. sp.

***Cervarita picta* n. sp.**

(Figs. A-F)

Readily differentiated from all other known fruit fly species by the characteristics given for the generic diagnosis.

Head 0.75mm long, 0.99mm wide. Frons broad, parallel-sided, 0.5mm long, and 0.51mm wide, distinctly concaved at middle; brownish tinged with dark brown coloration in the middle from anterior of lunule to the median portion; fronto-orbitals, ocellars and postocellars subequal in length, weak, seta-like; cylendrically elongated frontal processes as long as frons, blackish, each bearing 4 blackish spines, and with soft long dark brown and blackish pubescence, basal spine seta-like, long and fine; inferior fronto-orbital bristles set just anterior of the base of precess. Vertex brownish, 2 pairs of vertical bristles, inner pair much longer and thicker than outer pair; ocellar triangle fuscous, small. Occiput light brown, slightly swollen at lower portion, occipital row conspicuous, blackish, posterior and lower portions of occiput with sparse hair-like bristles. Cheek moderately broad, yellowish brown; genal bristle conspicuous. Eye broad, about as long as broad. Lunule shining brown, lying between anterior of eyes. Face waxy yellow, with a short median rufous streak on oral margin; vibrissal edge with a row of vibrissal bristles. Antennae yellowish brown except 3rd segment which is fuscous brown, first segment short, rectangular, as long as wide, about 1/2 as long as 2nd segment, with short blackish hairs; apex of 2nd segment broader than base,



Figs. A-E. *Cerarita picta* (male). A. Lateral view of head B. Dorsal view of head; C. Mesonotum; D. Distribution map of pleurae and mesonotum bristles; E. Femur I. anps: anterior notopleural bristle; ass: anterior supra alar bristle; ds: dorsocentral bristle; hs: humeral bristle; ms: mesopleural bristles; prs: propleural bristles; ps: presutural bristle; pts: pteropleural bristle; sts: sternopleural bristle.

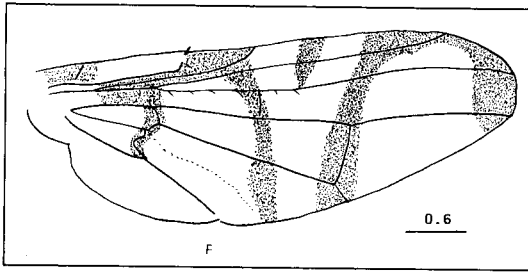


Fig. F. *Cervarita picta* (male) wing.

with blackish hairs on apex, median seta about as long as segment, blackish; 3rd segment elliptical, about 1.6 times as long as wide. Arista fuscous, brown at base, with distinct pubescence.

Thorax longer than wide, shining reddish brown, obscured by erected blackish hairs; propleuron with a row of weak propleural bristles; scapular bristles short, dorsocentral bristles more or less located in a transverse line with anterior supraalar bristles. Wing rather narrow, 4.6mm long, 1.7mm wide; costal vein with 2 spines at apex of subcostal vein, short, thickened, blackish; vein R_{2+3} nearly straight, bare; vein R_{4+5} undulated, with bristles, sparse, weak, ending beyond vein r-m; vein M and vein R_{4+5} , parallel; cross vein r-m and m-cu nearly parallel, the former placed just behind the middle of 1st M2; fulvous streaks distinct, 2 convergent V-shaped markings present: apical one is extending from apex of cell R1 along wing margin to base of 2nd M2, another branch covering m-cu and ending at apex of $Cu_1 + 1st A$; basal one is divided from stigma into two branches, outer branch covering cross vein r-m, ending at middle of lower portion of cell Cu_1 , inner branch is extending along bc and ending at apex of cross vein cu-an; one short, wedge-shaped streak is inserted between these 2 streaks, extending from anterior of basal 1/3 of cell R1 to

the middle of vein R_{4+5} . Legs yellowish brown with brownish pubescence, front femora with long brownish bristles on dorsal surface and with blackish, thickened bristles on ventral surface, the latter longer and thicker than the former; tip of middle tibia with one spur, blackish, long; hind tibia with 2 spurs, short, blackish.

Abdomen covered with numerous hairs, shining fuscous except the apex with yellowish brown.

Collection data: Holotype, male, Tongpu (1,200m), Nantou Hsien, 23-XII-1985, Y. H. Tseng. collected with sweeping net.

Acknowledgment

The authors wish to express their sincere thank to Dr. J. C. Lien, Head of the Department of Entomology, National Institute of Preventive Medicine, National Health Department, Republic of China for reading of the manuscript. Financial support is by the Council of Agriculture, Executive Yuan, Republic of China.

References

- Chen, S. H.** 1934. Notes on Chinese Trypetinae. *Sinensia* 18(1-6): 69-123.
- Hardy, D. E.** 1973. The fruit flies (Tephritidae-Diptera) of Thailand and bordering countries. *Pacif. Ins. Monogr.* 31: 353 pp, 8 pls.
- Hardy, D. E.** 1974. The fruit flies of the Philippines (Diptera: Tephritidae). *Pacif. Ins. Monogr.* 32: 266 pp, 6 pls.
- Shiraki, T.** 1933. A systematic study of Trypetidae in the Japanese Empire. *Mem. Fac. Sci. Agr. Taihoku Imp. Univ.* 8: 599 pp, 14 pls.

Received for publication March 12, 1992; revised manuscript accepted April 22, 1992.