



# Formosan Entomologist

Journal Homepage: [entsocjournal.yabee.com.tw](http://entsocjournal.yabee.com.tw)

## A New Species of *Cybocephalus* (Coleoptera : Cybocephalidae) from Taiwan **【Research report】**

### 台灣方頭出尾蟲屬一新種記述 (鞘翅目：方頭出尾蟲科) **【研究報告】**

Ming-Yi Tian, Hong Pang  
田明義、龐虹

\*通訊作者E-mail :

Received: Accepted: 1994/06/15 Available online: 1994/09/01

#### Abstract

A new species *Gybocephalus taiwanensis* from Taiwan is described and illustrated in this paper.

#### 摘要

本文描述台灣產方頭出尾蟲屬一新種—台灣方頭出尾頭，*Cybocephalus taiwanensis*，並輔以重要之性狀圖。新種與日本方頭出尾頭蟲 *Cybocephalus nipponicus* En-drödy-Younga 相似，但以下列特徵與後者相區別：前足脛節纖細；雄性外生殖器基片端緣凹入；陽莖側觀不明顯彎曲。

**Key words:** *Cybocephalus taiwanensis* sp. nov., Coleoptera, Cybocephalidae, Taiwan.

**關鍵詞:** *Cybocephalus taiwanensis*、新種、鞘翅目、方頭出尾科(方頭甲科)、台灣。

Full Text:  [PDF\( 0.08 MB\)](#)

下載其它卷期全文 Browse all articles in archive: <http://entsocjournal.yabee.com.tw>

# A New Species of *Cybocephalus* (Coleoptera: Cybocephalidae) from Taiwan

Ming-Yi Tian South China Agricultural University, Guangzhou 510642, China  
Hong Pang Guangdong Entomological Institute, Guangzhou 510260, China

## ABSTRACT

A new species *Cybocephalus taiwanensis* from Taiwan is described and illustrated in this paper.

**Key words:** *Cybocephalus taiwanensis* sp. nov., Coleoptera, Cybocephalidae, Taiwan.

## 台灣方頭出尾蟲屬一新種記述(鞘翅目: 方頭出尾蟲科)

田明義 華南農業大學 廣州510642

龐虹 廣東省昆蟲研究所 廣州510260

## 摘 要

本文描述台灣產方頭出尾蟲屬一新種—台灣方頭出尾蟲, *Cybocephalus taiwanensis*, 並輔以重要之性狀圖。新種與日本方頭出尾蟲 *Cybocephalus nipponicus* Endrödy-Younga 相似, 但以下列特徵與後者相區別: 前足脛節纖細; 雄性外生殖器基

片端緣凹入；陽莖側觀不明顯彎曲。

**關鍵詞：***Cybocephalus taiwanensis*、新種、鞘翅目、方頭出尾出科(方頭甲科)、台灣。

## Introduction

All members of the small family Cybocephalidae are predators of armored scale insects (Endrödy-Younga, 1968), but some species have been found prey on other pests such as whiteflies and mites. Both adult and larva of cybocephalid beetles feed on the same preys. These small beetles play an important role in controlling the population of armored scales in orchards and forests.

Up to now, about 140 species of *Cybocephalus* have been recorded all over the world, but only 3 species, *Cybocephalus nipponicus* Endrödy-Younga (Endrödy-Younga, 1971a, b), *C. sublucidus* (Plavishtshikov) (Jelinek, 1982) and *C. gibbulus* Erichson (Tao and Lo, 1968), were recorded from China. In this paper one species collected on guava trees from Taiwan is described as new to science.

### *Cybocephalus taiwanensis* Tian et Pang sp. nov. (Fig. 1)

**Male:** Head yellow, translucent, with dark brown eyes. Pronotum yellow with a stripe of posterior margin dark brown. Elytra dark brown, without metallic sheen. Prosternum and mesosternum brown. Metasternum, pygidium and abdominal sterna dark brown. Legs yellow.

Head comparatively broad, width almost twice as length, somewhat shagreened with indistinct punctures. Clypeus produced moderately in front of eyes. Eyes large, both internal and external margins distinctly arcuate in dorsal view (Fig. 1a). Antenna 11-segmented,

club distinctly separated from funicle, 3rd segment almost 3 times longer than width (Fig. 1b). Pronotum broad and convex transversely, shagreened with indistinct punctures. Elytra length shorter than combined width. Front tibia slender. Tarsi relatively strong, 4th segment longer than 1st one (Fig. 1c). Male genitalia as in Fig. 1 (d,e,f). Apical process short and pointed, almost straight in profile. Basal plate broad, with parallel sides.

**Female:** dark brown including with head and pronotum.

**Length:** 0.95–1.10 mm with head bent. Width: 0.65–0.75 mm.

**Holotype:** ♂, Fengshan Tropical Horticultural Experiment Station, Taiwan, XII, 1993, H.C. Wen leg. Paratypes: 7 ♂♂, 9 ♀♀, same data as holotype. Holotype, and 14 paratypes deposited in South China Agricultural University, Guangzhou, 2 paratypes (1♂, 1♀) deposited in National Chung Hsing University, Taichung, Taiwan.

**Distribution:** Taiwan.

**Remarks:** The new species is alike to *Cybocephalus nipponicus*, but can be easily distinguished from the latter by the following characters: front tibia slender; apical margin of basal plate considerably concaved; in profile penis not curved.

## Acknowledgments

We wish to express our gratitude to Mr. Hung-chich Wen of Fengshan Tropical Horticultural Experiment Station, Taiwan Agricultural Research Institute, Taiwan for his providing the materials.

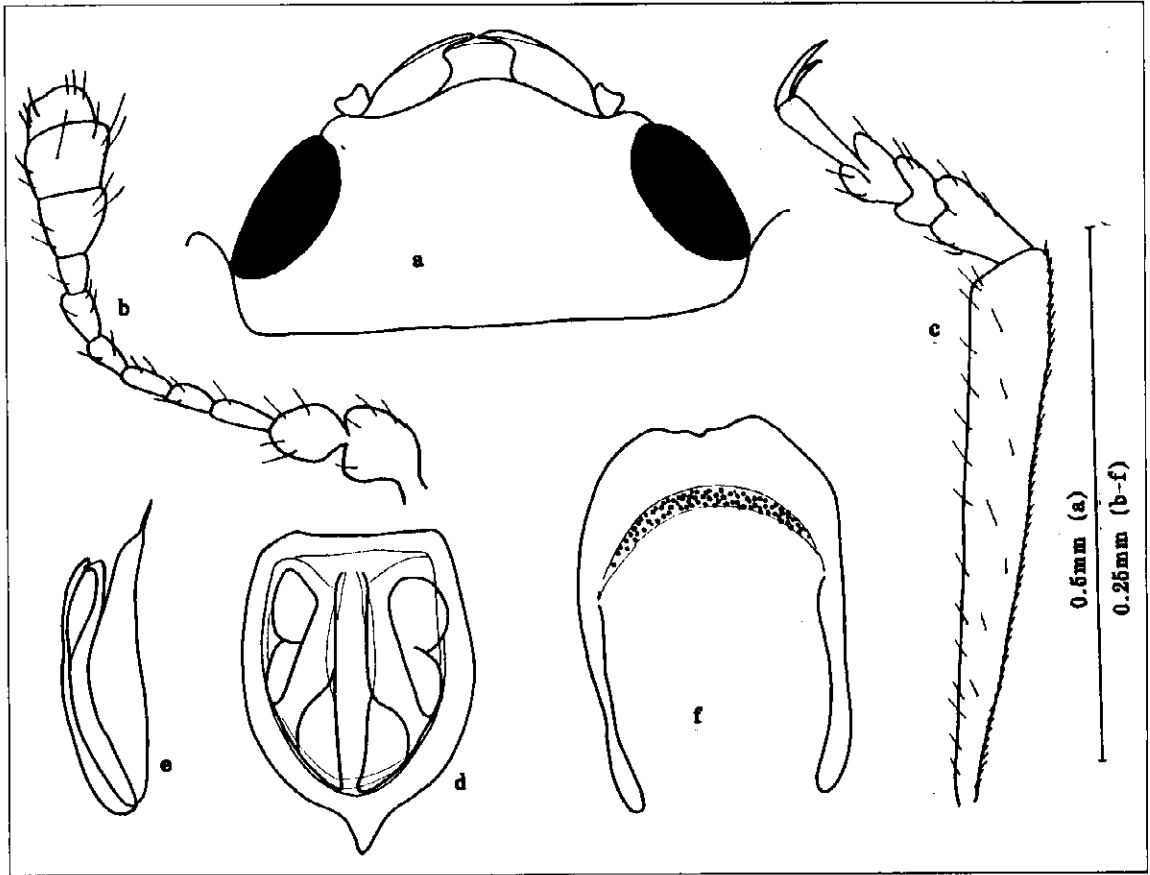


Fig. 1. *Cybocephalus taiwanensis* Tian et Pang, sp. nov. a. head (dorsal view); b. antenna; c. front tibia and tarsi; d. penis (dorsal view); e. penis (lateral view); f. basal plate (ventral view).

## References

- Endrödy-Younga, S.** 1968. Monographie der Paläarktischen Arten der Familie Cybocephalidae (Coleoptera: Clavicornia) Acta. Zool. Hung. 14: 27-115.
- Endrödy-Younga, S.** 1971a. Neus ergebnisse bei der bearbeitung der paläarktischen und orientalischen Cybocephalidae (Coleoptera: Clavicornia). Acta Zool. Hung. 17: 243-249.
- Endrödy-Younga, S.** 1971b. Colcoptera: Cybocephalidae. Insects of Micronesia 16: 281-285.
- Jelinek, J.** 1982. *Brachypterus sublucidus* Plav. transferred to *Cybocephalus* Er. (Coleoptera, Nitidulidae). Acta Ent. Bohemoslov, 79: 61-63.
- Tao, C. C., and K. C. Lo.** 1968. Survey of natural enemies of citrus insects of Taiwan province. China Cultural University, Agricultural Science of China. 38pp.

Received for publication March 9, 1993; revised manuscript accepted June 15, 1994