



Formosan Entomologist

Journal Homepage: entsocjournal.yabee.com.tw

One new Sericid beetle from Taiwan (Coleoptera:Scarabaeidae) **【Research report】**

台灣產絨毛金龜屬(Maladea) **【研究報告】**

Hirokazu Kobayashi、Ching-Kin Yu*

小林裕和、余清金*

*通訊作者E-mail:

Received: Accepted: 1997/01/12 Available online: 1997/09/01

Abstract

A new sericid species, *Maladera shouchiana* in Taiwan is described and illustrated.

摘要

文敘述台灣產絨毛金龜屬之一新種 (*Maladera shouchiana*)。該種種小名取自其採集地名。

Key words: Taiwan, Scarabaeidae, *Maladera shouchiana*.

關鍵詞: 台灣、金龜科、壽卡絨毛金龜。

Full Text:  [PDF\(0.92 MB\)](#)

下載其它卷期全文 Browse all articles in archive: <http://entsocjournal.yabee.com.tw>

One New Sericid Beetle from Taiwan (Coleoptera: Scarabaeidae)

Hirokazu Kobayashi

Shoin High School, 1-16-10 Kitazawa, Setagaya-ku, Tokyo, 155 Japan.

Ching-Kin Yu*

Muh Sheng Museum of Entomology, 6-2 Nantsun Road, Puli, Nantou, Taiwan, R.O.C.

ABSTRACT

A new sericid species, *Maladera shouchiana* in Taiwan is described and illustrated.

Key words: Taiwan, Scarabaeidae, *Maladera shouchiana*.

Introduction

In this paper, the authors will describe a new sericid beetle from Taiwan. It belongs to genus *Maladera* Mulsant, 1871.

The holotype designated in this study is deposited in the collection of the Department of Plant Pathology and Entomology, National Taiwan University, Taipei. Other specimens are preserved in the Kobayashi's collection.

Maladera shouchiana Kobayashi et Yu, sp.n.(Figs. 1-3)

Male: Oval, ventral surface and legs (except for tarsi) dark reddish brown, dorsal surface uniformly blackish brown or dark reddish brown, tarsi dark blackish brown, antennae yellowish brown. Surface of body opaque, feebly iridescent under certain light on middle and posterior femora, with clypeus, antennae,

tibiae and tarsi shining.

Clypeus trapezoidal, rather strongly punctate, antero-lateral angles gently rounded, anterior margin feebly sinuate at the middle, with a few erect hairs on anterior part. Frontoclypeal suture gently curved. Frons sparsely and finely punctate, bearing a few long erect hairs near eyes. Antennae 10-segmented, the 6th and 7th segments narrowed and somewhat protruded inward, with club composed of 3 lamellae, 1.6 times as long as footstalk.

Pronotum shallowly, rather densely punctate, fringed with sparse hairs along the lateral margins, lateral margins broadest at base, roundly convergent to front, anterior angles protruded but not acute, posterior ones dully angulated. Scutellum rather sparsely punctate, with a almost smooth line at the middle. Elytral intervals weakly convex, finely, sparsely punctate, with several short setae near lateral

*Correspondence / reprint request address

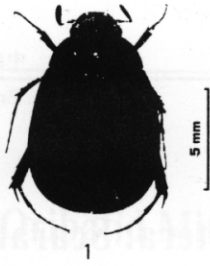


Fig. 1 Habitus of *Maladera shouchiana* sp. n.

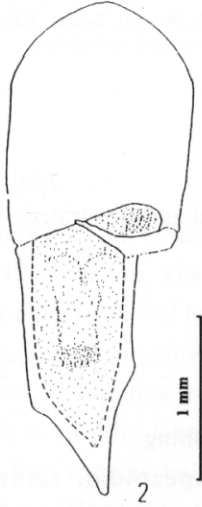


Fig. 2 Male genitalia of *Maladera shouchiana* sp. n.

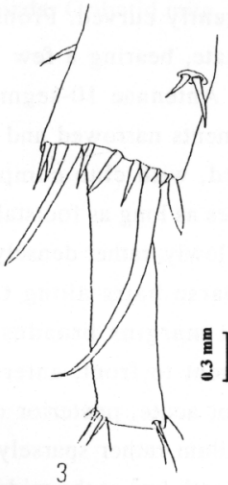


Fig. 3 Apical portion of posterior tibia and basitarsus of *Maladera shouchiana* sp. n.

sides. Pygidium gently convex, shallowly and rather densely punctate, with a faint longitudinal line, bearing scattered erect hairs near apical margin.

Abdominal sternites sparsely punctate, each with a transverse row of short setae. Anterior tibia bidentate, second tooth small but evident. Posterior femur vaguely punctate, about 3 times as long as its breadth, with a transversely row of hairs on apical third, anterior margin weakly arched, with a fine serration along it, posterior margin almost straight, postero-lateral angle subrectangular. Posterior tibia somewhat dilated, 2.5 times as long as its breadth, rather coarsely, sparsely punctate, outer longest terminal spur slender and incurved, a little shorter than basal tarsal segment. Posterior tarsus impunctate, with one or two short setae on ventral side.

Length: 10.0-11.0 mm, **breadth:** 6.0-6.5 mm.

Holotype: ♂, PINGTUNG Shouchia, 26-vii-1993, C. K. Yu leg.

Paratypes: 5 ♂♂, same data as for the holotype.

Remarks: This species is closely allied to *Maladera secrata horaiana* Nomura, 1974 (Nomura, 1974), but may be separated from the latter by the following points: short antennal club, incurved posterior tibial spur, posterior tarsus with one or two short setae on ventral side.

Acknowledgement

The authors wish to express their sincere gratitude to Dr. Yau-I Chu of National Taiwan University, Taipei, for his critical reading of the original manuscript.

References

Received for publication November 22, 1996

Revised manuscript accepted June 12, 1997

- Nomura, S., 1974. On the Sericini of Taiwan.
Tōhō-Gakuhō Kunitachi, 24: 81-115.

台灣產絨毛金龜屬 (*Maladera*) 之一新種

小林 裕和 松蔭高等學校 日本東京都世田谷區北澤 1-16-10
余 清 金* 木生昆蟲博物館 南投縣埔里鎮南村路6-2號

摘 要

本文敘述台灣產絨毛金龜屬之一新種壽卡絨毛金龜 (*Maladera shouchiana*)。該種種小名取自其採集地名。

關鍵詞：台灣、金龜科、壽卡絨毛金龜