



Formosan Entomologist

Journal Homepage: entsocjournal.yabee.com.tw

A New Record of the Chrysomelidae (Coleoptera: Chrysomeloidea) from Taiwan 【Scientific note】

一種臺灣產新記錄金花蟲【科學短訊】

Hsien-Tzung Shih* Wen-Jer Wu Chyi-Chen Ho
石憲宗*、吳文哲、何琦琛

*通訊作者E-mail: htshih@wufeng.tari.gov.tw

Received: 2002/10/14 Accepted: 2002/11/15 Available online: 2002/12/01

Abstract

The species *Cryptocephalus ohnoi* Kimoto, 1983 has hitherto been known from Japan, and it is reported here as a new record from Taiwan. The study shows the distribution, diagnostic characters, host plant, and economic importance of this species. The specimens are deposited in the Insect and Mite Collection of Taiwan Agricultural Research Institute.

摘要

山桂花金花蟲原分佈於日本，文中首次記錄本種於臺灣之分佈，並描述其診斷特徵、寄主資料與經濟重要性。所有檢查之標本保存於農業試驗所之昆蟲與蟎類標本館。

Key words: Chrysomelidae, *Cryptocephalus ohnoi*, Taiwan, new record

關鍵詞: 金花蟲科、山桂花金花蟲、臺灣、新記錄種

Full Text: [PDF\(0.46 MB\)](#)

下載其它卷期全文 Browse all articles in archive: <http://entsocjournal.yabee.com.tw>

A New Record of the Chrysomelidae (Coleoptera: Chrysomeloidea) from Taiwan

Hsien-Tzung Shih* Department of Applied Zoology, Taiwan Agricultural Research Institute, 189 Chung-cheng Rd. Wufeng, Taichung 413, Taiwan, R.O.C.

Wen-Jer Wu Department of Entomology, National Taiwan University, Taipei 106, Taiwan, R.O.C.

Chyi-Chen Ho Department of Applied Zoology, Taiwan Agricultural Research Institute, 189 Chung-cheng Rd. Wufeng, Taichung 413, Taiwan, R.O.C.

ABSTRACT

The species *Cryptocephalus ohnoi* Kimoto, 1983 has hitherto been known from Japan, and it is reported here as a new record from Taiwan. The study shows the distribution, diagnostic characters, host plant, and economic importance of this species. The specimens are deposited in the Insect and Mite Collection of Taiwan Agricultural Research Institute.

Key words: Chrysomelidae, *Cryptocephalus ohnoi*, Taiwan, new record

Cryptocephalus ohnoi Kimoto, 1983 山桂花金花蟲 (Fig. 1-A, B)

Cryptocephalus ohnoi Kimoto, 1983, Entomol. Rev. Jpn. 38: 45-54.

Type deposition: Kyushu Univ.

Specimens examined: TAIWAN: Taipei County, Shihding (石碇), 2 ♂, 2 ♀, 10-IV-2001. Sweep net, H. T. Shih.

Diagnostic characters: Elytron black with 6 yellowish-brown markings, with side straight, with regularly arranged longitudinal rows and smooth interstices, and slightly costate at lateral area. Pygidium subtriangular, with rounded apex.

Distribution: Japan, Taiwan (**New record**).

Host plant: *Maesa tenera* Mez (Myrsinaceae) (**New record**).

Remarks: There are over 580 chrysomelid species belonging to 172 genera according to a recent study from Taiwan (Shih *et al.*, 2002) and its adjacent islands (Shih, unpublished data). This paper is one of the series of papers on the taxonomy of the Chrysomelidae from Taiwan and its adjacent islands. This leaf beetle has hitherto been known from Japan (Honshu) (Kimoto, 1983), and it is newly recorded from Taiwan. This species resembles *C. perelegans* Baly, 1873, but differs in the pronotum being much elongate, and the elytron being black with 6 yellowish brown markings (Baly, 1873; Kimoto, 1983).

Economic importance: No records available.

*Correspondence address
e-mail:htshih@wufeng.tari.gov.tw

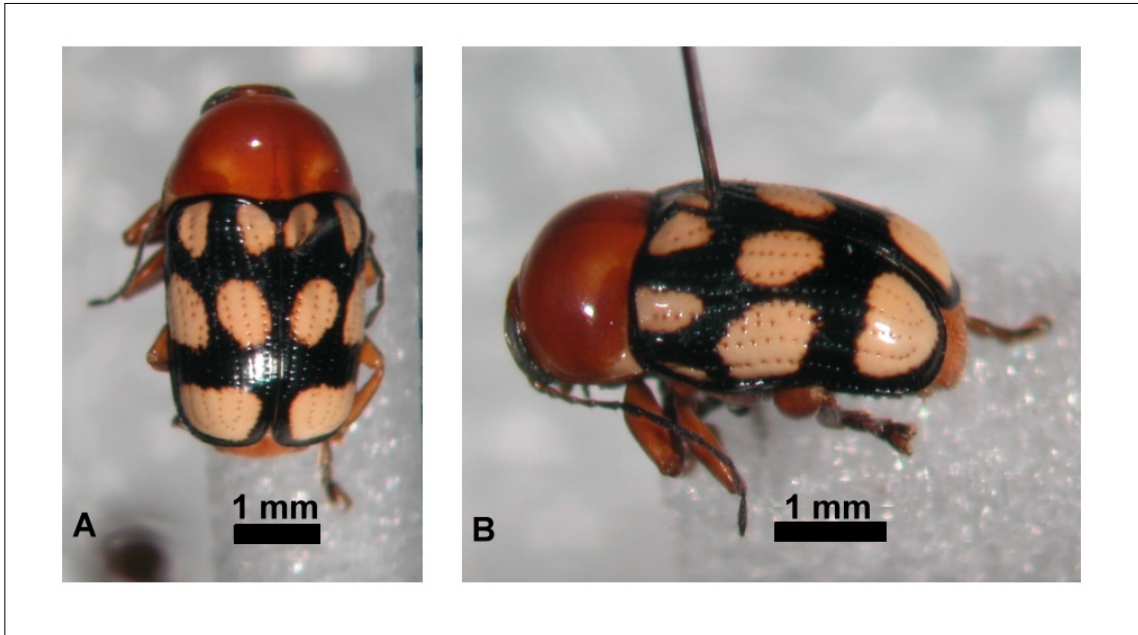


Fig. 1. Adult of *Cryptocephalus ohnoi* Kimoto, 1983. A, dorsal view; B, lateral view.

Acknowledgments

This work was financially supported in part by the Council of Agriculture, Executive Yuan, Taiwan, Republic of China (91AS-7.2.2-CI-C1).

References

Baly, J. S. 1873. Catalogue of the phytophagous Coleoptera of Japan, with descriptions of specimens new to science I. Trans. Entomol. Soc. London 1873: 69-99.

Kimoto, S. 1983. New or little known Chrysomelidae (Coleoptera) from Japan and its adjacent regions, III. Entomol. Rev. Jpn. 38: 45-54.

Shih, H. T., C. C. Ho, and W. J. Wu. 2002. Chrysomelidae (Coleoptera) from Kinmen. J. Agric. Res. China 51 (in press) (in Chinese).

Received Oct. 14, 2002

Accepted Nov. 15, 2002

一種臺灣產新記錄金花蟲

石憲宗* 行政院農業委員會農業試驗所應用動物組 413 臺中縣霧峰鄉中正路 189 號

吳文哲 國立臺灣大學昆蟲學系 106 臺北市羅斯福路四段 1 號

何琦琛 行政院農業委員會農業試驗所應用動物組 413 臺中縣霧峰鄉中正路 189 號

摘 要

山桂花金花蟲原分佈於日本，文中首次記錄本種於臺灣之分佈、並描述其診斷特徵、寄主資料與經濟重要性。所有檢查之標本保存於農業試驗所之昆蟲與蟎類標本館。

關鍵詞：金花蟲科、山桂花金花蟲、臺灣、新記錄種