



Formosan Entomologist

Journal Homepage: entsocjournal.yabee.com.tw

New Species and New Records of Taiwanese Bryocoris Fallén (Hemiptera: Miridae) 【Research report】

臺灣蕨盲椿屬新種新記錄種(半翅目：盲椿科)【研究報告】

Cheng-Shing Lin*
林政行*

*通訊作者E-mail: cslin@mail.nmns.edu.tw

Received: 2003/01/27 Accepted: 2003/06/10 Available online: 2003/09/01

Abstract

Three new species, *Bryocoris* (*Bryocoris*) *formosensis* Lin, n. sp., *B.* (*Cobalorrhynchus*) *latus* Lin, n. sp., and *B.* (*Cobalorrhynchus*) *paravittatus* Lin, n. sp. and three new records (*B.* (*B.*) *insuetus* Hu et Zheng, 2000, *B.* (*B.*) *gracilis* Linnavuori, 1962, and *B.* (*Cobalorrhynchus*) *flaviceps* Zheng et Liu, 1992) from Taiwan are reported. A key to the Taiwanese species of the genus *Bryocoris* Fallén, as well as pictures and figures of the genital capsule are included.

摘要

本文描述蕨盲椿屬三新種：臺灣蕨盲椿 (*B.* (*Bryocoris*) *formosensis* Lin, n. sp.)、寬翅蕨盲椿 (*B.* (*Cobalorrhynchus*) *latus* Lin, n. sp.)、類帶蕨盲椿 (*B.* (*Cobalorrhynchus*) *paravittatus* Lin, n. sp) 及三新記錄種：奇突蕨盲椿 (*B.* (*Bryocoris*) *insuetus* Hu et Zheng, 2000)、纖細蕨盲椿 (*B.* (*Bryocoris*) *gracilis* Linnavuori, 1961)、黃頭蕨盲椿 (*B.* (*Cobalorrhynchus*) *flaviceps* Zheng et Liu, 1992)。並附臺灣蕨盲椿屬種檢索表、新種及比對種 (*B.* (*Bryocoris*) *gracilis* Linnavuori, 1961、*B.* (*Cobalorrhynchus*) *biquadrangulifer* (Reuter, 1906), *B.* (*Cobalorrhynchus*) *vittatus* Hu et Zheng, 2000)之背面觀及外生殖器圖。

Key words: Miridae, Bryocorinae, *Bryocoris*, *Cobalorrhynchus*, new species, new record

關鍵詞: 盲椿科、單室盲椿亞科、蕨盲椿屬、錐喙蕨盲椿亞屬、新種、新記錄

Full Text: [PDF\(0.82 MB\)](#)

下載其它卷期全文 Browse all articles in archive: <http://entsocjournal.yabee.com.tw>

New Species and New Records of Taiwanese *Bryocoris* Fallén (Hemiptera: Miridae)

Cheng-Shing Lin* Department of Zoology, National Museum of Natural Science, Taichung 404, Taiwan

ABSTRACT

Three new species, *Bryocoris* (*Bryocoris*) *formosensis* Lin, n. sp., *B.* (*Cobalorrhynchus*) *latus* Lin, n. sp., and *B.* (*Cobalorrhynchus*) *paravittatus* Lin, n. sp. and three new records (*B.* (*B.*) *insuetus* Hu et Zheng, 2000, *B.* (*B.*) *gracilis* Linnavuori, 1962, and *B.* (*Cobalorrhynchus*) *flaviceps* Zheng et Liu, 1992) from Taiwan are reported. A key to the Taiwanese species of the genus *Bryocoris* Fallén, as well as pictures and figures of the genital capsule are included.

Key words: Miridae, Bryocorinae, *Bryocoris*, *Cobalorrhynchus*, new species, new record

Introduction

Bryocoris Fallén was erected as a unique genus in 1829. Hsiao (1942) described *B. convexicollis* from China, Linnavuori (1961) described *B. gracilis* from Japan, Kerzhner (1972, 1988) described *B. montanus* and *B. persimilis* from the Russian Far East, Zheng and Liu (1992) described *B. flavipes*, *B. hsiaoi*, and *B. pallidipes*, and Hu and Zheng (2000) described *B. bui*, *B. concavus*, *B. insuetus*, *B. xiongi*, *B. lii*, *B. lobatus*, *B. sichuanensis*, and *B. vittatus* from China, and transferred *pallidipes* Zheng et Liu 1992 into the genus *Sinevia* Kerzhner of the Ecritotarsini. Six species in the genus *Bryocoris* are described in this paper: three are described as new species and three as new records. This is the

first report on *Bryocoris* in Taiwan. The type series are deposited in the National Museum of Natural Science, and Taiwan Agricultural Research Institute, Taichung, Taiwan. Methods of dissection and terminology followed those of Hu and Zheng (2000).

Key to the Taiwanese species of the genus *Bryocoris* Fallén

1. Rostral segment IV stout and short, exposed portion of left paramere flat, plate-like (subgenus *Bryocoris* Fallén) ----- 2
- Rostral segment IV slender, long, exposed portion of left paramere simple, long, slender (subgenus *Cobalorrhynchus* Reuter)----- 5
2. Hemelytral costal margin straight -----

*Correspondence address
e-mail: cslin@mail.nmns.edu.tw

B. (Bryocoris) insuetus Hu et Zheng, 2000

Hemelytral costal margin slight convex
-----4

4. Scutellum yellowish brown-----*B. (Bryocoris) formosensis* Lin, n. sp.

Scutellum black -----*B. (Bryocoris) Gracilis* Linnavuori

5. Hemelytron > 2.5 mm wide-----*B. (Cobalorrhynchus) latus* Lin, n. sp.

Hemelytron < 2.5 mm wide-----6

6. Head black -----*B. (Cobalorrhynchus) paravittatus* Lin, n. sp.

Head not black ---*B. (Cobalorrhynchus) flaviceps* Zheng et Liu

***Bryocoris (Bryocoris) formosensis* Lin, n. sp. (Fig. 1A-C).**

Macropterous form (male). Body elongate, almost parallel-sided, with dense pubescence. Head black, post-lateral area with triangular-shaped, brown spot, Antennal segment I yellowish brown, long club-shaped with basal narrower, segments II and III black, long, slender, pubescent with long hairs, segment IV black, short with terminal moderately enlarged. Rostrum yellowish brown, terminal fuscous, reaching to middle of mesosternum, segment IV slightly longer than III. Collar brown, pronotum completely black; pronotal disk shallowly punctate and weakly rugulose, medial longitudinal area dark, concave, lateral pronotal margin straight, calli smooth, shiny, intercallar area punctate. Scutellum yellowish brown with black lateral margin. Hemelytral costal margin straight, basal 2/3 of costal margin pale. Clavus black, corium black, embolium light yellowish brown, cuneus light yellow, apical 1/5 of inner margin black. Membrane smoky brown. Apical angle of membranal cell blunt. Legs yellowish brown, terminal protibia and hind tarsus black. Thorax black ventrally. Ventral abdomen black,

terminal 1/3 yellowish brown.

Male genitalia opening oval, post-lateral side slightly concave, area near both openings covered with dense, moderately long, outwardly directed hairs; margin of capsule opening with a bifurcate process at left side near base of left paramere. Exposed portion of left paramere large, cephalic end with a finger-like process, caudal part with 2 lobe-like processes, one arising from 1 of the caudal angles, the other from near the finger-like process. Right paramere small, lanceolate.

Macropterous form (female). Very similar to male, but can be separated by the ventral abdominal black.

Brachypterous form (male). Body brown. Clypeus, buccula, and antero-lateral portion of head black. Antennal segment I brown, long, club-shaped, basal 1/3 narrow, segment II long, slender, basal and terminal 1/8 black, pubescent with erect long hairs, segments III and IV black, pubescent with erect long hairs. Collar yellowish brown. Pronotum sparsely rugose, brown, anterior angle and lateral margin blackish brown; lateral pronotal margin concavely sinuate. Scutellum brown, anterior and lateral marginal fuscous, middle slightly concave. Hemelytron lacking cuneus and membrane, cubitus fracture black. Corium with thick black band narrowing from coastal margin inwardly to medial fracture. Thorax black ventrally. Ventral abdomen black, terminal 1/3 yellowish brown.

Brachypterous form (female). Very similar to male, but can be separated by yellowish brown middle abdominal venter.

Measurements (in mm). Macropterous form. Head length 0.25, width 0.55, interocular distance 0.3. Antennal segment lengths 0.5: 0.95: 0.6: 0.4. Collar width 0.35; pronotal length 0.5, width 1.05. Scutellum length 0.3.

Claval commissure length 0.55, corium length 1.2; cuneus length 0.4, width 0.3; maximal width of 2 hemelytra at repose 1.15. Distance from head apex to costal fracture 2.1. Body length 3.6.

Brachypterous form. Head length 0.25, width 0.55, interocular width 0.3. Antennal segment lengths 0.5: 1: 0.75: 0.6. Collar width 0.35, pronotum length 0.4, width 0.8. Scutellum length 0.25. Hemelytral length 1.5, maximal width of 2 hemelytra at repose 1.1. Body length 2.5.

Holotype. ♂ (macropterous form), NANTOU: Chunyang (1200 m), 6-8-X-1998, C. S. Lin (NMNS ENT 2997-8). Paratypes: same as holotype, 1 ♂ (macropterous form), C. S. Lin (NMNS ENT 2997-324) (dissected). NANTOU: Sanlinchi, 2 ♂ (macropterous form), 19-V-1991, C. C. Chiang; Meifeng, 1 ♀ (macropterous form), 3-15-X-1990, C. K. Star, 2 ♀ (brachypterous form), 24-26-VI-1981, 1 ♀ (brachypterous form), 22-26-VI-1983, K. S. Lin and S. C. Lin, 1 ♀ (brachypterous form), 30-VII-1983, L.Y.Chou, 3 ♂ 3 ♀ (brachypterous form), 8-11-V-1984, K. C. Chou and C. C. Pan; Wushe (1150 m), 1 ♀ (brachypterous form), 19-22-IV-1983, K. C. Chou and S. P. Huang; Tungpu (1200 m), 1 ♀ (brachypterous form), 28-IV-1-V-1981, T. Lin and C. J. Lee, 13-16-XII-1982, 3 ♀ (brachypterous form), K. C. Chou and C. C. Pan, 1 ♂ (brachypterous form), 16-20-IV-1984, K. C. Chou and C. H. Yung; Sunkang (2100m), 2 ♀ (brachypterous form), 6-VIII-1984, K.S. Lin, 1 ♀ (brachypterous form), 13-15-IX, 1984, K. S. Lin and S. C. Lin; Tsuifeng (2300 m), 1 ♀ (brachypterous form), 1-3-IX-1982, L.Y.Chou and K. C. Chou, 1 ♀ (brachypterous form), 23-25-VI-1983, K. S. Lin and S. C. Lin, 1 ♀ (brachypterous form), 15-16-VIII-1984, K. C. Chou. TAOYUAN: Takuanshan, 1 ♂ (macropterous form), 17-IV-1990, C. C. Chiang. PINGTUNG: Kuaiku, 1 ♂ 2 ♀ (macropterous form), 21-V-1991, C. C. Chiang. TAICHUNG: Kukuan, 2 ♂ ,

21-XI-1990, C. C. Chiang; Anmashan, 4 ♂ (macropterous form), 2-3-V-1990, C. C. Chiang. KAOHSIUNG: Maolin, 1 ♂ (macropterous form), 28-IV-1998, M. L. Chan. HUALIEN: Tayulin (2560 m), 6 ♀ (brachypterous form), 12-15-IX-1980, K. S. Lin and C. H. Wang, 3 ♂ 7 ♀ (brachypterous form), 6-9-IX-1983, L. Y. Chou and K. C. Chou. TAOYUAN: Paling (800 m), 1 ♀ (brachypterous form), 3-5-V-1983, K. C. Chou and C. C. Pan. CHIAYI: Alishan, 1 ♂ 2 ♀ (brachypterous form), 5-9-VIII-1981, L. Y. Chou and S. C. Lin, 3 ♀ (brachypterous form), 7-8-VIII-1986, K. C. Chou; Lulinshan, 1 ♀ (macropterous form), 18-V-1991, C. C. Chiang.

Remarks: The new species is allied to *B. (Bryocoris) gracilis* Linnavuori (Fig. 2C, D), but can be identified by the yellowish-brown first antennal segment, scutellum, and genital capsule instead of black, and the blunt finger-like process of the left paramere not pointed. .

Etymology: Named for the type locality.

Bryocoris (Bryocoris) gracilis

Linnavuori, 1961 (Fig. 2C, D).

Bryocoris gracilis Linnavuori, 1961.

Ann. Ent. Fenn. 28: 68, fig.1

(original description).

Materials examined: NANTOU: Sanlinchi, 1 ♂, 19-V-1991, C. C. Chiang (sweep net) (NMNS-Ent 1128-893); Jenai. Aoawanta, 1 ♂, 30-IV-1991, W. T. Yang (sweep net) (NMNS-Ent 1448-154); Meifeng (2130 m), 1 ♂, 2-4-VI-1980, L. Y. Chou and C.C. Chen; 1 ♂, 8-VI-1980, K.S. Lin and B. H. Chen; Wushe (1150 m), 3 ♀, 19-22-IV-1983, K. C. Chou & S. P. Huang; Tsuifeng (2300 m), 1 ♀, 8-V-1981, K. S. Lin and S. C. Lin, 1 ♀, V-1984, K. S. Lin and K. C. Chou (malaise trap); Tungpu (1200 m), 1 ♀, 18-23-XI-1981, T. Lin and W. S. Tang. TAIPEI: Chutzuhu, 1 ♂ , 26-V-1983, K. C. Chou.

Body elongate, almost parallel-sided,

pubescence dense. Head shiny black. Antennal segment I with smaller, yellowish-brown basal 1/3, the rest enlarged, black, club-shaped, pubescent with long hairs. Segment II long, slender, black, with long hairs. Segment III and IV smaller and shorter, black with long hairs. Rostrum yellowish brown, terminal end black, extending to middle of mesosternum. Collar whitish yellow, with long hairs. Pronotum black, comparatively short, anterior narrow, posterior broadened, lateral margin almost straight, pronotal disk punctate, with dense pubescence. Scutellum black, pubescent with long hairs, basal area weakly concave. Clavus black, punctate, with dense pubescence. Basal 1/2 of corium ochraceous, terminal 1/2 fuscous. Embolium with 2/3 ochraceous, the other 1/3 fuscous. Cuneus pale ochraceous, apical inner margin with fuscous band. Membrane pale smoky ochraceous. Legs yellowish brown, with coxa whitish yellow and terminal tarsal segments fuscous. Body ventral totally black.

Male genital capsule black, margin of capsule opening with 3 sickle-like processes, exposed portion of left paramere large, flat, basal with curved, hook-shaped protrusion, terminal end with a straight, club-shaped protrusion. Right paramere small, horn-shaped.

Measurements (in mm). Head length 0.3, width 0.55, interocular distance 0.3. Antennal segment lengths 0.5: 1.0: 0.6: 0.6. Collar width 0.4; pronotal length 0.5, width 1.0. Scutellum length 0.6, claval commissure length 0.6, corium length 1.1; cuneus length 0.65, width 0.35; maximal width of 2 hemelytra at repose 1.1. Distance from head apex to costal fracture 1.9. Body length 3.2.

Bryocoris (Bryocoris) insuetus Hu et
Zheng, 2000 (Fig. 2A, B).

Bryocoris (Bryocoris) insuetus Hu et

Zheng, 2000. Acta Zootaxon. Sinica.
25: 241-267. fig 44 (original
description).

Materials examined: PINGTUNG: K. Coffage, 1 ♂, 21-V-1991, C. C. Chiang (sweep net) (NMNS ENT 1125-232). NANTOU: Sanlinchi, 1 ♂, 19-V-1991, C. C. Chiang (sweep net) (NMNS ENT 1128-892).

Body almost parallel-sided, pubescence dense. Head blackish brown to black, lateral area of vertex yellowish brown. Antennal segment I yellowish brown to blackish brown. Segment II black; segments III and IV blackish brown to black. Collar yellowish brown. Pronotum black, pronotal disk punctate and weakly rugulose; lateral pronotal margin almost straight. Scutellum black. Hemelytral costal margin almost straight. Clavus black, corium yellowish brown or endocorium slightly darker. Cuneus whitish yellow, apical 1/5 of inner margin blackish brown. Membrane brown. Apical angle of membranal cell blunt. Legs whitish yellow, apical 1/3 of femora and tibiae yellowish brown. Thorax ventral black. Abdominal venter black or yellowish brown.

Male genital capsule blackish brown to black. Exposed portion of left paramere flat, large, cephalic end with a long curved process, caudal portion broad, with 2 small, curved processes. Right paramere small, lanceolate.

Measurements (in mm). Head length 0.3, width 0.6, interocular distance 0.4. Antennal segment lengths 0.55:1.0:the rest missing. Collar width 0.45, pronotal length 1.0, width 1.0. Scutellum length 0.4. Claval commissure length 0.7, corium length 1.2, cuneus length 0.65, width 0.4. Maximal width of 2 hemelytra at repose 1.1. Distance from head apex to costal fracture 2.0. Body length 3.4.

Bryocoris (Cobalorrhynchus) flaviceps
Zheng et Liu, 1992 (Fig. 2E, F).

Bryocoris flaviceps Zheng et Liu 1992:
190, 300-301, fig. 886 (original
description).

Materials examined: HSINCHU:
Kuanhsi, 23-V-1992, 1 ♂, C. Y. Li (sweep
net) (NMNS ENT 1431-1017). NANTOU:
Meifeng (2150 m), IX-1984, 1 ♂, K. S. Lin
and K. C. Chou (malaise trap), X-1985, 1
♂, K.S. Lin (malaise trap); Tungpu (1200
m), 10-14-I-1983, 1 ♂2 ♀, K. C. Chou and
S.P. Huang; Sungkang (2100 m), 1 ♂,
6-VIII-1984, K. S. Lin.

Body elongate, parallel-sided,
pubescence dense. Head yellowish
brown or blackish brown. Antennal
segment I yellowish brown or blackish
brown, club-shaped. Segment II fuscous,
long, slender, pubescent with long hairs.
Segment III and IV, fuscous, short.
Rostrum yellowish brown, reaching to
base of mid-coxa. Pronotum black, or
yellowish brown with antero-lateral
portion blackish brown. Scutellum black
or blackish brown. Clavus yellowish
brown with terminal 1/5 blackish brown.
Corium smoky ochraceous with fuscous
inner margin and terminal margin.
Embolium pale ochraceous. Cuneus pale
ochraceous, with fuscous inner margin
and terminal tip. Membrane blackish
ochraceous, with outer margin pale
ochraceous. Body ventral with thorax
black, and abdomen yellowish brown.
Legs yellowish white.

Male genitalia capsule fuscous,
margin of its opening simple, with no
process. Exposed portion of left
paramere lanceolate. Right paramere
small, basal enlarged, and terminal end
pointed.

Measurements (in mm). Head
length 0.2, width 0.6, interocular
distance 0.4. Antennal segment lengths
0.5: 1.0: 0.4: 0.4. Collar width 0.4,
pronotal length 0.5, width 0.9.
Scutellum length 0.4, claval commissure

length 0.6, corium length 1.2, cuneus
length 0.55, width 0.3; maximal width
of 2 hemelytra at repose 1.2. Distance
from head apex to costal fracture 2.1.
Body length 3.1.

Bryocoris (Cobalorrhynchus) latus Lin,
n. sp. (Fig. 1D, F).

Male. Body elongate oval, pubescence
dense. Head fuscous, clypeus and buccula
black. Antennal segment I yellowish
brown, club-shaped, basal 1/3 narrower,
segment II yellowish brown, terminal 1/3
fuscous to black. Rostrum yellowish
brown, taut, reaching middle of
mesosternum, segment IV slightly longer
than III.

Collar pale yellowish brown;
pronotum comparatively broad, convex,
punctures moderately shallow and small.
Ground color of pronotum shiny black,
densely pubescent with long hairs.
Scutellum black, moderately convex in
middle, densely pubescent with long hairs.
Hemelytron comparatively broad, costal
margin evenly and convexly curved,
costal margin fuscous. Clavus fuscous,
corium and basal 1/2 of embolium fuscous,
anterior corium and embolium yellowish
brown. Cuneus yellowish brown, apex
dark. Membrane gray. Legs pale yellow,
pretarsal and terminal tarsal segment
dark. Thorax ventrally black. Ventral
abdominal fuscous to black.

Left margin of capsule opening
concave. Exposed portion of left
paramere curved, terminal end
branched, lateral saw-like, with many
tiny, tooth-like processes. Right
paramere small, apical with
knife-shaped protrusion, basal portion
relatively enlarged.

Measurements (in mm). Head
length 0.25, width 0.6, interocular
distance 0.4. Antennal segment lengths
4: 0.85: others missing. Collar width
0.45, pronotal length 0.25, width 1.2.

Scutellum length 0.5, claval commissure length 0.5, corium length 1.5, cuneus length 0.75, width 0.55, maximal width of 2 hemelytra at repose 2.7. Distance from head apex to costal fracture 2.1. Body length 3.4.

Holotype: ♂. ILAN: Taitung Tuling, 18-VII-2001, C. S. Lin and W. T. Yang (sweeping net) (NMNS ENT 3686-25). Paratypes: NANTOU: Tungpu (1200 m), 1 ♂, 28-IV-2-I-1981, T. Lin and C. J. Lee, 2 ♀, 22-25-XII-1982, K. C. Chou and C. C. Pan, 1 ♂ 1 ♀, XI-1985, K. S. Lin (malaise trap); Meifeng (2150 m), 1 ♀, 22-26-VI-1982, K. S. Lin and S. C. Lin; Sungkang (2100 m), 1 ♂, XII-1985, K. S. Lin (malaise trap).

Remarks: The new species is very similar to *Bryocoris* (*Cobalorrhynchus*) *biquadrangulifer* (Reuter) (Fig. 1F), but can be distinguished by the yellowish brown head, black pronotum and scutellum, broad collar, and the lanceolate left paramere.

Etymology. The specific name "latus" means broad in Latin, referring to the comparatively broad hemelytron.

Bryocoris (*Cobalorrhynchus*) *paravittatus* Lin, n. sp. (Fig. 1G-J).

Male. Body elongate, narrowly oval, densely pubescent. Head shiny black. Basal 1/5 of antennal segment I yellowish-white, the rest brown. Epipharynx shiny black, rostrum brown, reaching to base of mid-coxa. Neck brown, collar yellowish-white, with erect hairs; pronotum moderately convex, shiny, sparsely and deeply punctate; lateral margin almost straight; pronotal disk black, with a medial longitudinal stripe, 1/2 width of scutellum. Scutellum yellowish brown, terminal tip black, pointed, basally moderately concave, faintly rugulose. Hemelytron with straight costal margin at basal 1/3 and then weakly and convex curved; clavus yellowish-brown,

basal 1/5 black. Basal embolium with a black band; apical margin of cuneus with black band. Membrane pale fuscous. Leg yellowish-white, apical 1/2 of fore and middle femora with fuscous band, tibiae fuscous, apical 1/3 of hind femur fuscous, tibia fuscous. Body ventral with black thorax, and brown abdomen. Genital capsule black, exposed portion of left paramere low narrow, rectangular, terminal end pointed. Right paramere short, small, apical portion enlarged, terminal end pointed, curved.

Measurements (in mm). Head length 0.3, width 0.6, interocular distance 0.4. Antennal segment length 0.5: 1.4:others missing. Collar width 0.4, pronotal length 0.6, width 1.1. Scutellum length 0.5, claval commissure length 0.8, corium length 1.9, cuneus length 0.9, width 0.65, maximal width of 2 hemelytra at repose 1.7. Distance from head apex to costal fracture 2.7. Body length 4.5

Holotype: ♂, NANTOU: Jenai Aowanta, 30-IV-1992, W. T. Yang (sweep net) (NMNS ENT 1448-135). Paratypes: same as holotype, 3 ♂ 7 ♀ (NMNS ENT 1448-200, 236, 23, 197, 97); Meifeng (2150 m), 4 ♂ 2 ♀, 28-VIII-25-IX-1997, C. S. Lin and W. T. Yang (NMNS ENT 2998-642, 643, 644, 645, 646, 647) (malaise trap); 1 ♀, 3-15-X-1990, C. K. Star (yellow pan trap). TAICHUNG: Nanfushi, 10 ♀, 10-11-VI-1986, K. W. Huang; Anmashan, 1 ♀, 3-V-1992, C. Y. Li (NMNS ENT 1446-1973) (sweep net); Hoping, 1 ♂, 15-X-1989, K. W. Huang (sweep net). HSINCHU: Kuanhsi, 1 ♂, 23-V-1992, C. Y. Li (NMNS ENT 1431-979) (sweep net). PINGTUNG: K. Coffage, 1 ♂, 21-V-1991, C. C. Chiang (sweep net).

Remarks. This new species is similar to *B.* (*Cobalorrhynchus*) *vittatus* Hu et Zheng, 2000 (Fig. 1K), but can be recognized by the following characters: pronotal disk comparatively deeply punctate, and the exposed portion of left paramere without subbasal digitate

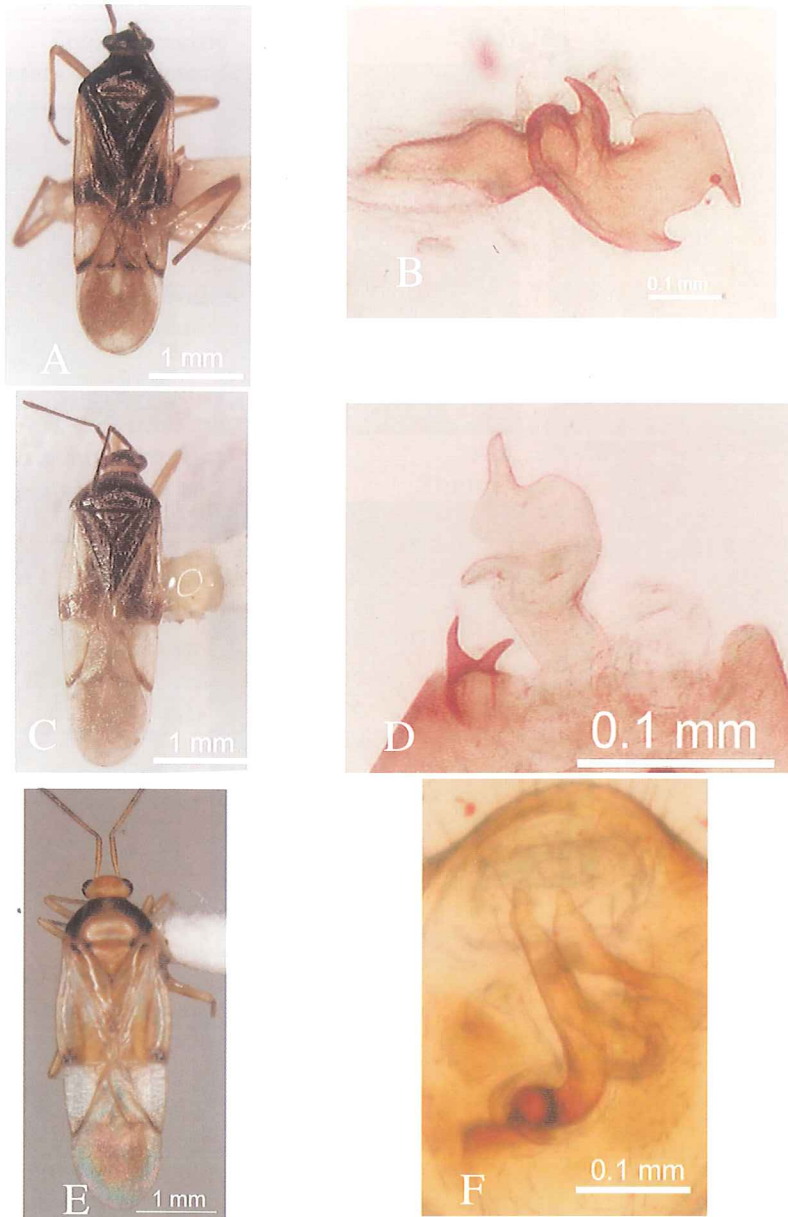


Fig. 1. A. *Bryocoris (Bryocoris) formosensis* Lin, n. sp., holotype (male, macropterous form) dorsal view; B. *B. (Bryocoris) formosensis* Lin, n. sp., paratype (male, brachypterous form) dorsal view; C. Left paramere of *B. (Bryocoris) formosensis* Lin n. sp., holotype (male, macropterous form) ventral view; D. *B. (Cobalorrhynchus) latus* Lin, n. sp., holotype (male) dorsal view; E. External genitalia of *B. (Cobalorrhynchus) latus* Lin, n. sp., holotype (male) ventral view; F. *B. (Cobalorrhynchus) biquadrangulifer* (Reuter, 1906), paratype (female) dorsal view; G. *B. (Cobalorrhynchus) paravittatus* Lin, n. sp., holotype (male) dorsal view; H. External genitalia of *B. (Cobalorrhynchus) paravittatus* Lin, n. sp., holotype (male) ventral view; I. Left paramere of *B. (Cobalorrhynchus) paravittatus* Lin, n. sp., paratype (male) ventral view; J. Right paramere of *B. (Cobalorrhynchus) paravittatus* Lin, n. sp., paratype (male) ventral view; K. *B. (Cobalorrhynchus) vittatus* Hu et Zheng, paratype (female) dorsal view.

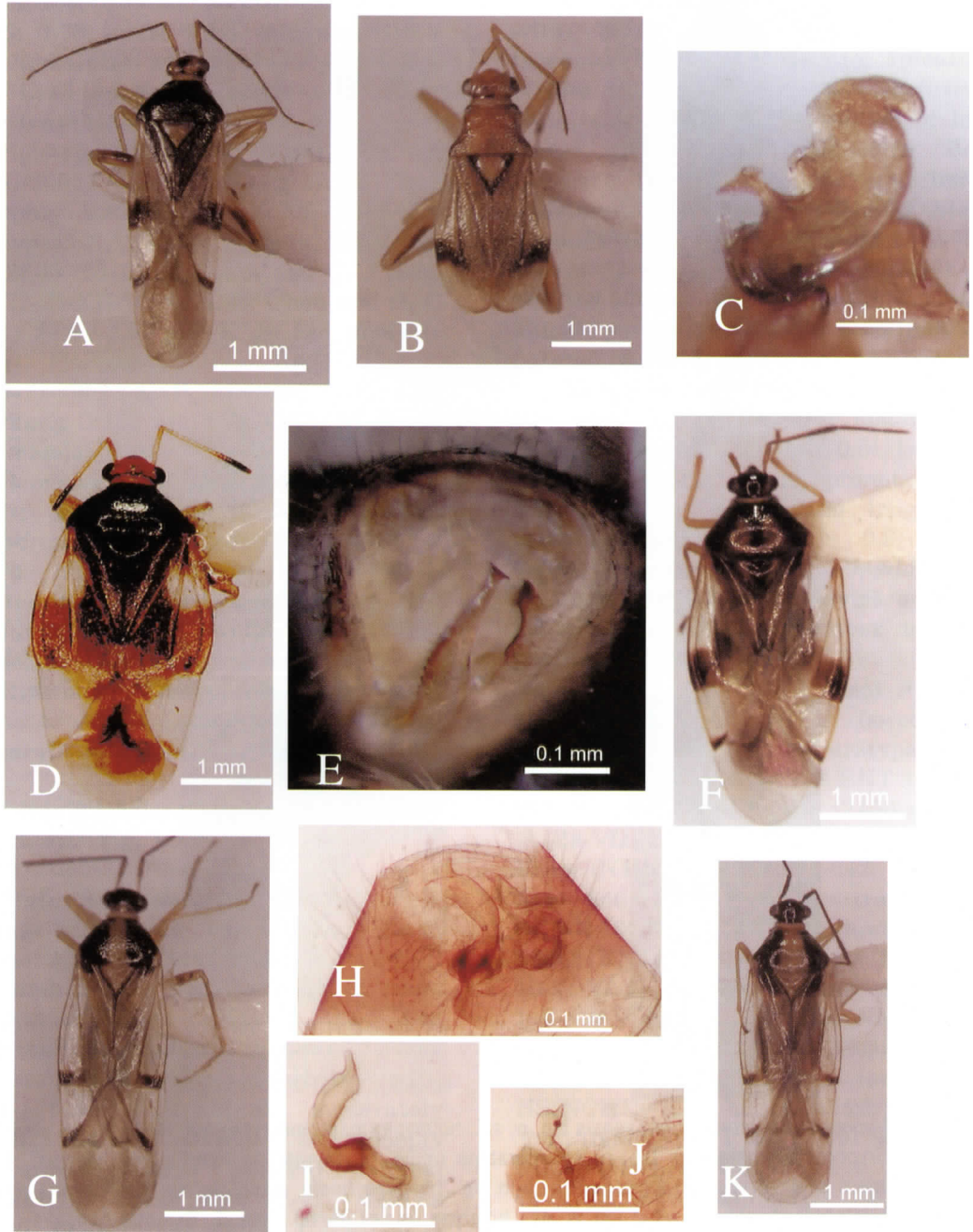


Fig. 2. A. *Bryocoris (Bryocoris) insuetus* Hu et Zheng (male) dorsal view; B. *Bryocoris (Bryocoris) insuetus* Hu et Zheng (male) ventral view; C. *B. (Bryocoris) gracilis* Linnavuori (male) dorsal view; D. External genitalia of *B. (Bryocoris) gracilis* Linnavuori (male) ventral view; E. *B. (Cobalorrhynchus) flaviceps* Zheng et Liu (male) dorsal view; F. External genitalia of *B. (Cobalorrhynchus) flaviceps* Zheng et Liu ventral view.

process.

Etymology. The specific name "paravittatus" refers to its resemblance to *B. vittatus*.

Acknowledgments

I would like to express my sincere thanks to Prof. L. Y. Zheng, Department of Biology, Nankai Univ., China for allowing me to study the type materials. Thanks are also given to two anonymous reviewers who provided valuable comments on this manuscript. This research was supported by a grant from the National Science Council, Taiwan (NSC 91-2621-B-002).

References

- Hsiao, T. Y.** 1942. Some new species of Miridae (Hemiptera) from China. Iowa Coll. J. Sci. 15: 241-251.
- Hu, Q., and L. Y. Zheng.** 2000. A revision of Chinese species of *Bryocoris* Fallén. Acta Zootaxon. Sinica 25: 241-267.
- Kerzhner, I. M.** 1972. New and little known Heteroptera from the Far East of the USSR. Trudy Zool. Inst. Akad. Nauk USSR 52: 276-295.
- Kerzhner, I. M.** 1988. Family Miridae. pp. 778-857. In: P. A. Lehr, ed. Keys to Insects of the Far East of the USSR. Nauka, Leningrad.
- Linnavuori, R.** 1961. Contribution to the Miridae fauna of the Far East. Ann. Am. Entomol. Fenn. 27: 155-169.
- Zheng, L. Y., and G. Q. Liu.** 1992. Hemiptera: Miridae, In: J. W. Peng, ed. Iconography of Forest Insects from Hunan. Hunan People's Press, Changsha. China, pp. 290-305.

Received: Jan. 27, 2003

Accepted: June 10, 2003

臺灣蕨盲椿屬新種新記錄種(半翅目：盲椿科)

林政行* 國立自然科學博物館動物組 臺中市館前路一號

摘 要

本文描述蕨盲椿屬三新種：臺灣蕨盲椿 (*B. (Bryocoris) formosensis* Lin, n. sp.)、寬翅蕨盲椿 (*B. (Cobalorrhynchus) latus* Lin, n. sp.)、類帶蕨盲椿 (*B. (Cobalorrhynchus) paravittatus* Lin, n. sp) 及三新記錄種：奇突蕨盲椿 (*B. (Bryocoris) insuetus* Hu et Zheng, 2000), 纖細蕨盲椿 (*B. (Bryocoris) gracilis* Linnavuori, 1961)、黃頭蕨盲椿 (*B. (Cobalorrhynchus) flaviceps* Zheng et Liu, 1992)。並附臺灣蕨盲椿屬種檢索表、新種及比對種 (*B. (Bryocoris) gracilis* Linnavuori, 1961, *B. (Cobalorrhynchus) biquadrangulifer* (Reuter, 1906), *B. (Cobalorrhynchus) vittatus* Hu et Zheng, 2000)之背面觀及外生殖器圖。

關鍵詞：盲椿科、單室盲椿亞科、蕨盲椿屬、錐喙蕨盲椿亞屬、新種、新記錄