



# Formosan Entomologist

Journal Homepage: [entsocjournal.yabee.com.tw](http://entsocjournal.yabee.com.tw)

## 【Scientific note】

### 兩種鮮為人知的弄蝶雌蟲【科學短訊】

徐堉峰

\*通訊作者E-mail :

Received:    Accepted: 1988/11/23    Available online: 1989/03/01

## Abstract

### 摘要

本文依據產自臺灣北部及中部的標本報告雪山黃斑弄蝶 *Ochlodes siva yuchingkinus* Mura-yama & Shimonoya 及奇萊褐弄蝶 *Ploytrcmis kiraizana* (Sonan) 的雌蝶。前者係首次記載，後者則為初次之圖示、描述。

### Key words:

### 關鍵詞:

Full Text:  [PDF\(4.87 MB\)](#)

下載其它卷期全文 Browse all articles in archive: <http://entsocjournal.yabee.com.tw>

科 學 短 訊

NOTES ON THE LITTLE KNOWN FEMALES  
OF TWO HESPERIID SPECIES

Yu-Feng Hsu\*

Department of Plant Pathology and Entomology  
National Taiwan University  
Taipei, Taiwan 10765  
Republic of China

(Accepted for publication November 23, 1988)

ABSTRACT

This paper describes the little known females of two hesperiids from Taiwan, namely *Ochlodes siva yuchingkinus* Murayama & Shimonoya and *Polytremis kiraizana* (Sonan).

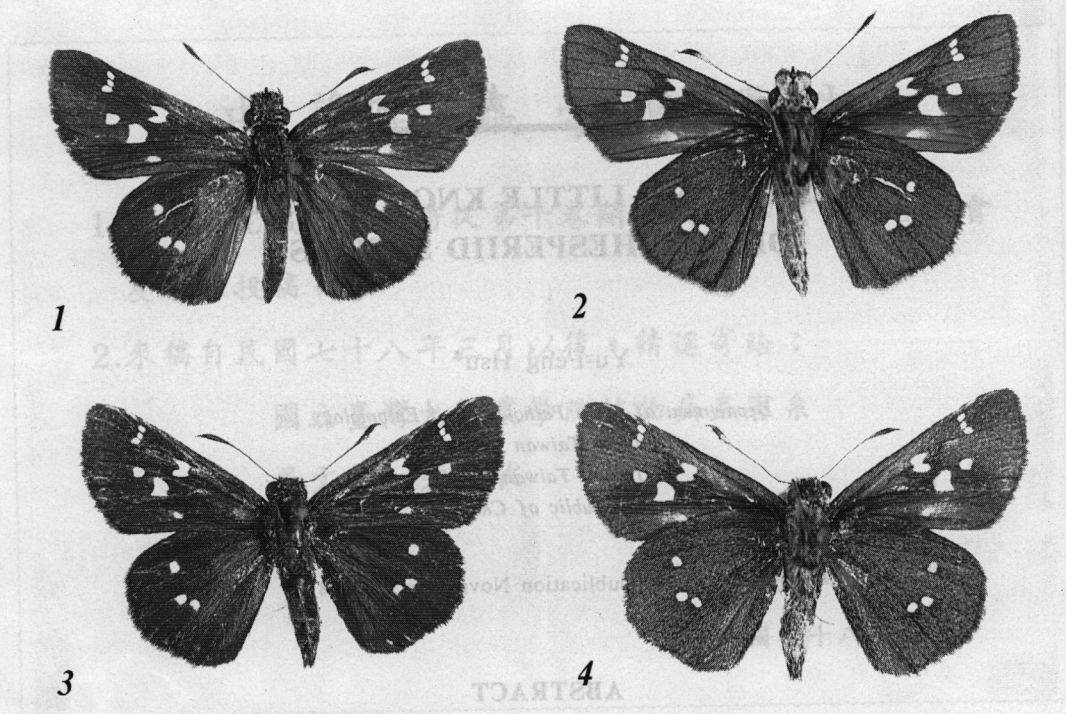
*Ochlodes siva yuchingkinus* Murayama & Shimonoya and *Polytremis kiraizana* (Sonan) are the rare species in Taiwanese skippers. Both of the species live in the mountains and univoltine. The female of the former species is unknown till now, and as for the latter species only a single female has been recorded by Yamanaka (1980), but the figure and morphology have not been illustrated. Fortunately the author have examined 3 ♀♀ of the former species collected from northern and central Taiwan, and 2 ♀♀ of the latter species collected from northern Taiwan. They are here described and illustrated for the first time.

*Ochlodes siva yuchingkinus* Murayama & Shimonoya, 1962 (Figs. 1-4, ♀)

*Ochlodes siva yuchingkinus* Murayama & Shimonoya, 1962: 53, figs. 27-28, ♂; Hamano, 1986: 263, pl. 54, fig. 31, ♂; Uchida, 1988: 174-175, fig. 180, ♂.

Female: Antennae black, length about 1/2 of the costa of forewing, club stout; apiculus narrow and short. Palpi erect, hairy, yellowish brown. Thorax dorsally covered with brown hairs and ventrally with yellowish brown hairs. Abdomen dorsally covered with glossy brown scales and ventrally with yellow scales and

\* Present address: Department of Entomological Sciences, University of California, Berkeley, CA 94720, U. S. A.



Figs. 1-4. *Ochlodes siva yuchingkinus* Murayama & Shomonoya ♀.  
 Figs. 1-2: individual from northern Taiwan (Mt. Lala);  
 Figs. 3-4: individual from central Taiwan (Shanlinhsi).

hairs. Upperside of forewing is brown to dark brown with yellowish brown basal hairs; semi-hyaline spots on each of discal cell, cells  $R_3$ ,  $R_4$ ,  $R_5$ ,  $M_3$  and  $Cu_1$ , in which  $Cu_1$  spot is the largest,  $R$  spots almost arranged in a row, and discal cell spot shaped like an alphabet 'H'. An additional minute yellow spot in cell  $Cu_2$ . Underside of forewing is paler than the upperside; upper portion scaling yellowish brown. Upperside of hindwing is almost same colour as that of forewing; only three semi-hyaline spots in each of cells  $R_5$ ,  $M_3$  and  $Cu_1$ . Underside of hindwing ground colour just likes that of forewing but covered with yellowish brown scales



Figs. 5-6. *Polytrems kiraizana* (Sonan) ♀.

all over the wing. Underside markings as those of the upperside. Cilia pale brown to dark brown.

Forewing length: 17.0-18.0 mm.

Specimens examined: 1 ♀; Mt. Lala, Taoyuan, northern Taiwan, 1,300-1,350 m. 10 July 1982. Yu-Feng Hsu leg. 1 ♀; Shanlinhsi, Nantou, central Taiwan, 20 June 1987. Chun-Lin Li leg. 1 ♀; Szuyuan, Taichung, central Taiwan, 24 June 1988. Yu-Feng Hsu leg.

Two more male materials from Szuyuan are also examined. This insect is only reported from northern Taiwan till now. According to the materials mentioned above, the known distribution range should be extended to central Taiwan.

*Polytremis kiraizana* (Sonan), 1983 (Figs. 5-6, ♀)

*Parnara kiraizana* Sonan, 1983: 255, tab. 20, fig. 3, ♂; Tanigawa, 1937: 58.

*Polytremis menica kiraizana* (Sonan); Evans, 1949: 444.

*Pelopidas kiraizana* (Sonan); Yamanaka, 1980: 126.

*Polytremis kiraizana* (Sonan); Hamano, 1986: 263, pl. 54, fig. 23, ♂; Uchida, 1988: 175, fig. 181.

Female: Antennae black, length about 1/2 of the costa of forewing, club somewhat stout; apiculus obtusely angled. Palpi erect, with grayish yellow hairs. Thorax dorsally covered with brown hairs and ventrally with grayish yellow hairs. Legs with long grayish yellow hairs. Abdomen dorsally covered with glossy brown hairs. Upperside of forewing is dark brown with basal pale brown hairs; semi-hyaline spots in each of the discal cell and cells of R<sub>3</sub>, R<sub>4</sub>, R<sub>5</sub>, M<sub>2</sub>, M<sub>3</sub> and Cu<sub>1</sub>; two in discal cell, one in each of the rest cells, in which Cu<sub>1</sub> spot is the largest, R spots arranged in a curve. A minute yellowish spot on cell Cu<sub>2</sub> is placing a linear sexual brand of the male. Upperside of forewing ground colour is paler than the underside; upper portion with yellowish brown scales. Upperside of hindwing is almost same colour as that of forewing; four minute semi-hyaline spots in each of cells M<sub>1</sub>, M<sub>3</sub>, Cu<sub>1</sub> and two in M<sub>1</sub>, and the lowest one is the largest. Underside of hindwing ground colour just likes that of forewing, but with yellowish brown all over the wing. Underside markings as the same as those of the upperside. Cilia of forewing is brown, and that of hindwing is pale brown.

Forewing length: 23.3-24.0 mm.

Specimens examined: 1 ♀; Mt. Kuai, Taipei, northern Taiwan, 12 July 1986.

Jung-Hui Tseng leg. 1 ♀; same locality. Emerged on 14 June 1988 from pupa. Yu-Feng Hsu leg.

The pupa attached on the underside of a leaf of *Miscanthus sinensis* Anders when it was discovered. So this plant is probably to be utilized as larval host of the insect.

Evens (1949), Hamano (1986) and Uchida (1988) all treated this species as a

*Polytremis* species, nevertheless the male of the species has a linear sexual brand on the forewing, which is an exception to the genus though the male genitalia is similar to *Polytremis* species in structure. Thus the systematic position should be confirmed in the further detailed study.

### ACKNOWLEDGEMENTS

The author is deeply grateful to Mr. K. Morishita and Dr. T. Shirozu for their kind advice. Thanks are also due to Mr. Chun-Lin Li, Mr. T. Shimonoya and Mr. Jung-Hui Tseng for their kindness in supplying me with valuable materials.

### REFERENCES

- Evens, W. H. 1949. Catalogue of the Hesperidae from Europe, Asia and Australia in the British Museum (Nat. Hist.). xix+ 502 pp. 53 pls. London.
- Hamano, E. 1986. Ecological Encyclopedia of Taiwanese Butterflies. 474 pp. (153 pls. included). Kodansha, Tokyo. (In Japanese).
- Murayama, S. and T. Shimonoya. 1962. On some interesting butterflies from Formosa, with description of two new species, 2 races and 7 new aberrant form. Tyô to Ga 13: 51-59. (In Japanese with English resume).
- Sonan, J. 1938. Notes on some butterflies from Formosa (5). Zephyrus 7: 250-256. (In Japanese)
- Tanigawa, T. 1937. A new habitat of *Parnara kiraizana* (Sonan). Insect's World 3(3/4): 58. (In Japanese).
- Uchida, H. 1988. Walking in the Blooming of Lantana. 183 pp. (183 figs. included). (In Japanese).
- Yamanaka, M. 1980. Description of Formosan butterflies (6). Tyô to Ga 30. suppl. 1: 1-143. (In Japanese).

## 兩種鮮為人知的弄蝶雌蟲

徐 堉 峰

國立臺灣大學植物病蟲害學研究所

本文依據產自臺灣北部及中部的標本報告雪山黃斑弄蝶 *Ochlodes siva yuchingkinus* Murayama & Shimonoya 及奇萊褐弄蝶 *Polytremis kiraizana* (Sonan) 的雌蝶。前者係首次記載，後者則為初次之圖示、描述。